

KETURAH

R E S E R V E

MBR City project brochure



KETURAH

RESERVE

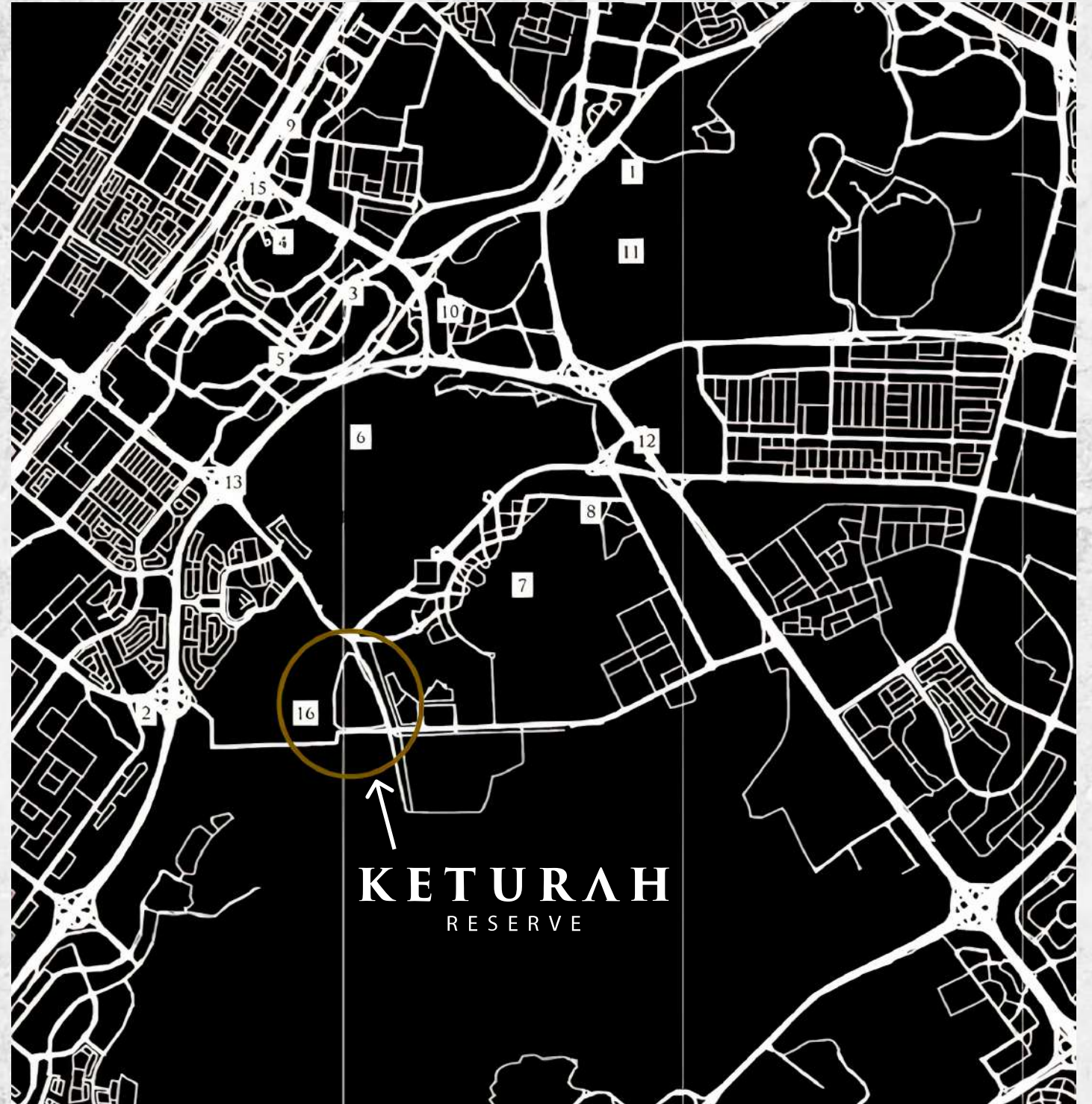
KETURAH RESERVE IS A
COLLECTION OF 4 AND 5
BEDROOM TOWNHOUSES
IN MAG CITY



+971 (4) 245-6510

15 MINUTES FROM THE CENTRAL DISTRICTS

The Dubai Mall is 12 minutes away and the Mall of the Emirates is 15 minutes away. Downtown Dubai and the legendary Burj Khalifa are a 12-minute drive, Jumeirah Beach and Madinat Jumeirah Beach are a 15-minute drive, and Dubai Marina and Palm Jumeirah are a 20-minute drive. Dubai International Airport is 18 minutes away.





IN URBAN AREA

The project is located in MAG City, a modern community designed to provide residents with the highest level of comfort and a great place to live with their families. This community features elegant townhouses surrounded by many green and landscaped gardens creating a peaceful and serene atmosphere.



FAST DEVELOPING AREA

Mohammed Bin Rashid City is one of the largest new mixed-use and residential construction projects. The project plan includes its own monorail linking the area with Dubai and Al Maktoum International Airports, the Mall of the World with the world's largest swimming pool, hospitals, schools, hotels, sports centers and landscaped parks.



STONE FACADE

The townhouses are designed in a modern style, where the beige stone facade plays in unison with the stone fence around the perimeter, while the wood paneling and slatted balcony railings repeat the natural landscape.





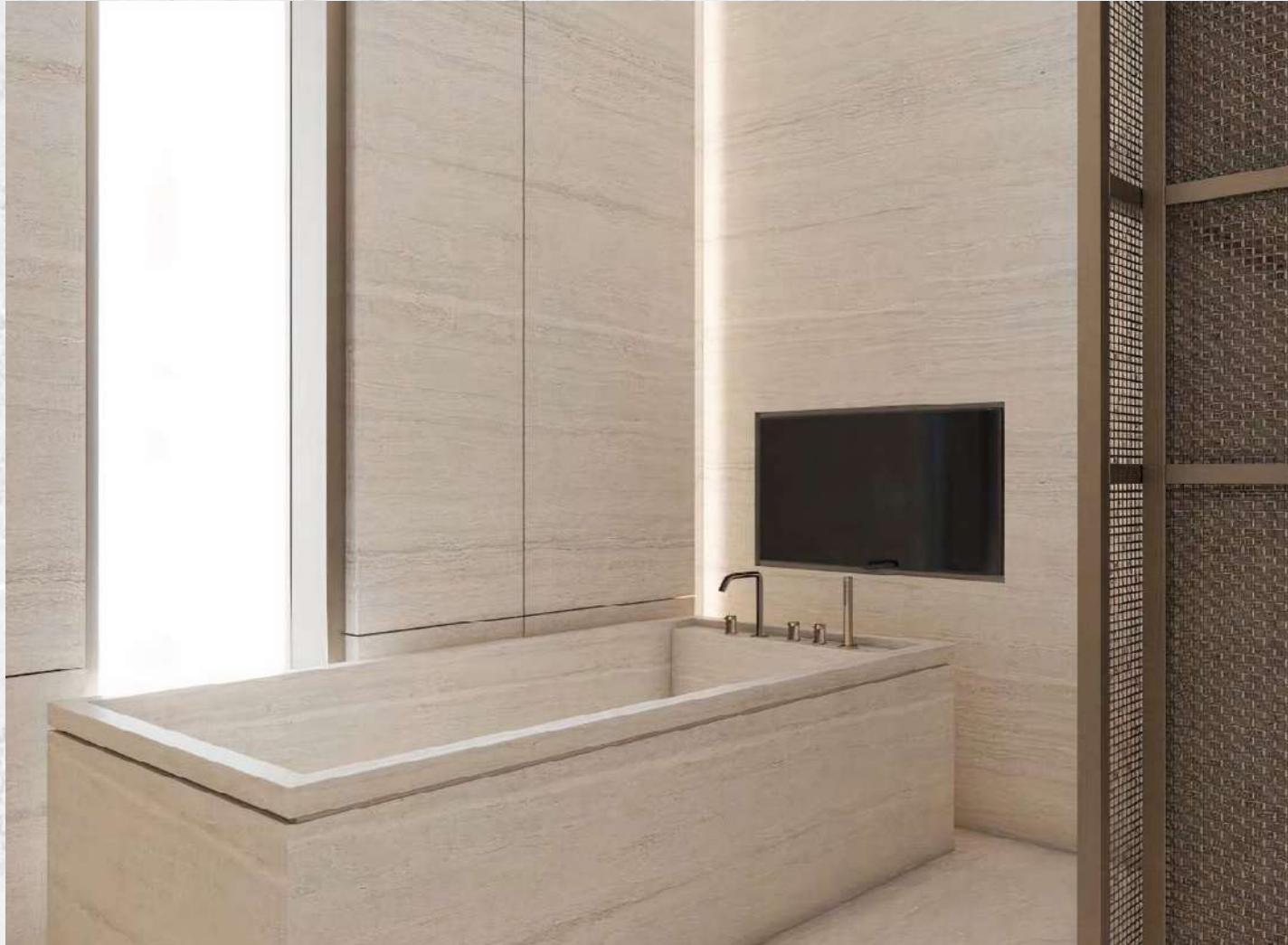
UNITY WITH
NATURE THANKS
TO WOODEN
ELEMENTS



NATURAL FINISHING

The interiors are made of natural materials in pastel colors. Wooden floors are elegantly combined with stone-look walls and stone countertops.





MARBLE BATHROOM

The bathrooms are tiled in beige and taupe tones and are complemented by a black marble sink, built-in shower, bathtub with TV and decorative partitions.

KETURAH
RESERVE

BATHROOM

+971 (4) 245-6510



CHILDREN'S ROOMS

On the first and second floors there are spacious rooms and halls for children's games and leisure.





LIVING ROOM WITH HOME CINEMA
ON THE GROUND FLOOR



KETURAH
RESERVE

SPACIOUS OFFICE

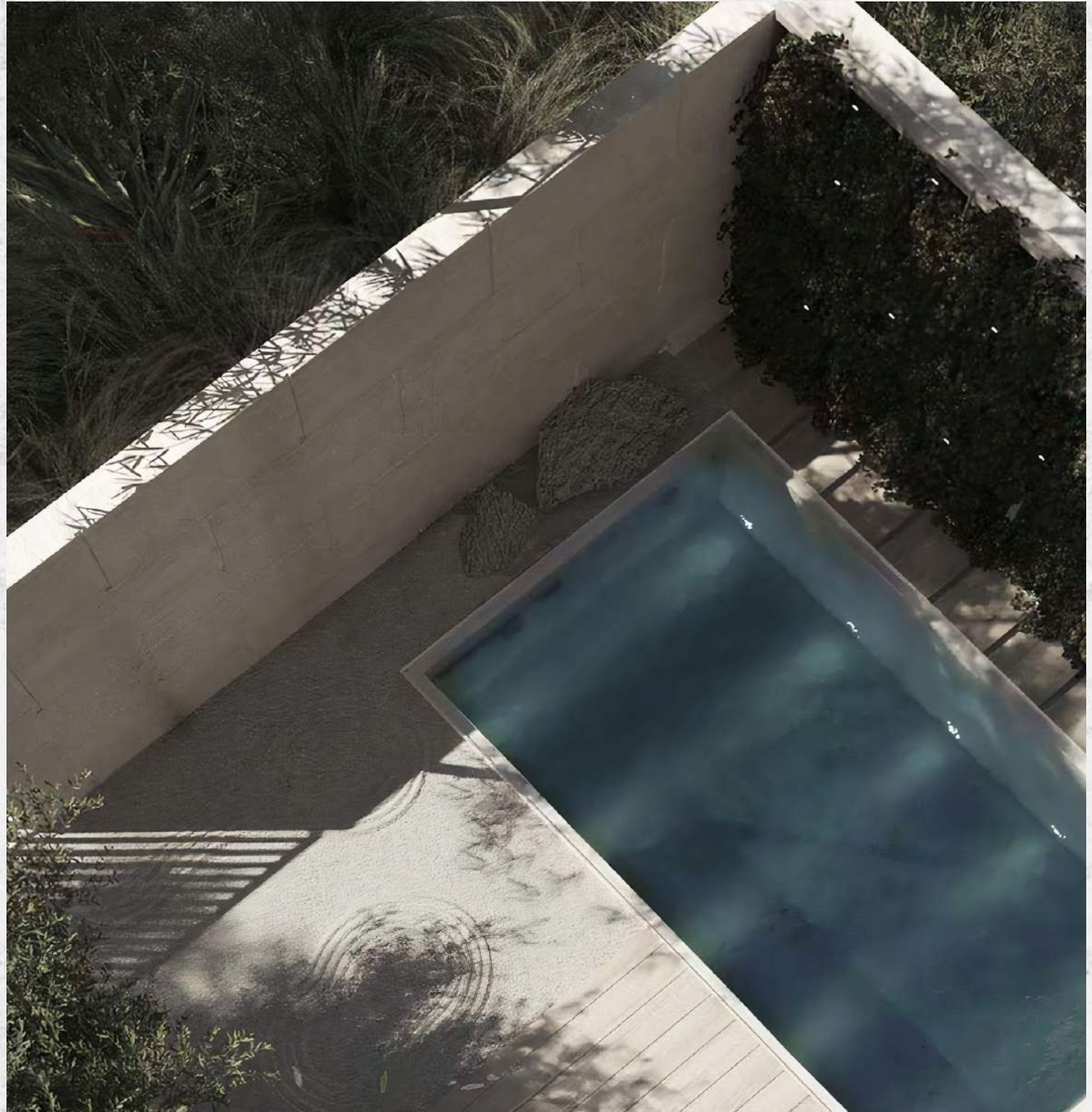
+971 (4) 245-6510

KITCHEN WITH EXIT TO THE YARD



TERRACE AND POOL

Townhouses with 4 bedrooms boast an outdoor terrace and a private courtyard with a swimming pool on the ground floor.



KETURAH
RESERVE

POOL ON THE TERRITORY

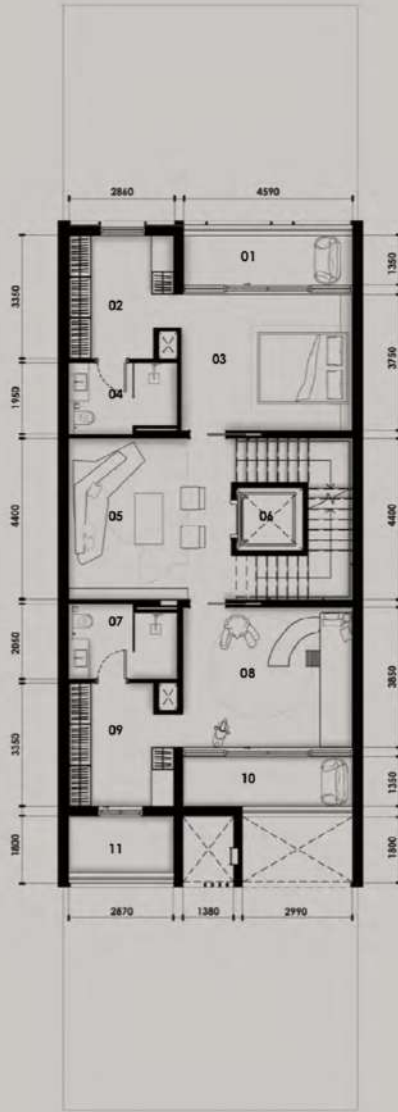
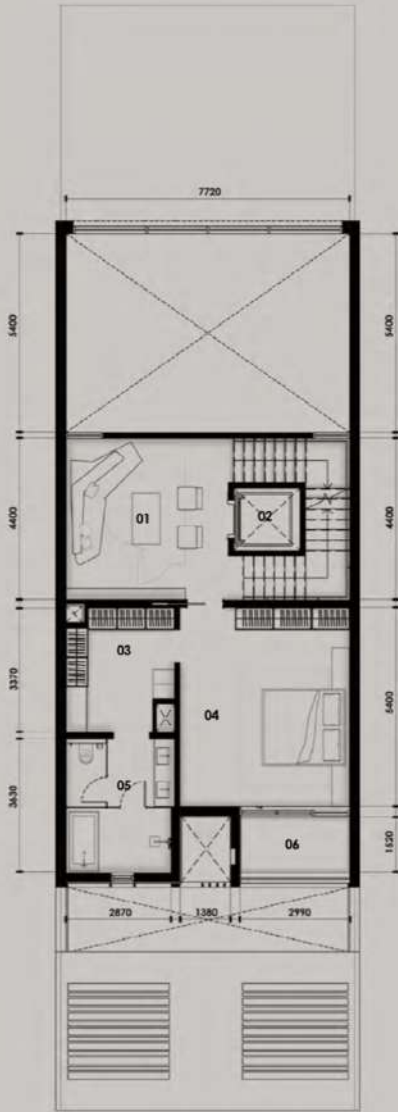
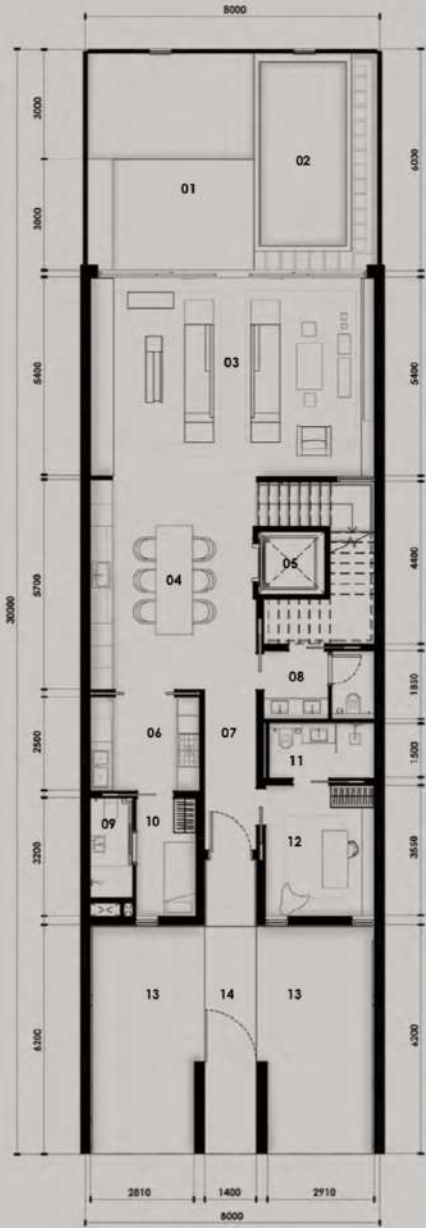
+971 (4) 245-6510

ROOF WITH TERRACE

The outdoor roof terrace is complemented by a cozy seating area and open kitchen, creating a peaceful space for al fresco dining and warm conversations.



TOWNHOUSE LAYOUTS





BUSINESS CENTER

A 24-hour business center is located on the project site with townhouses. You can snuggle up in a chair with a book from the circular reference library, or sit in a personalized cooling capsule for sound therapy, research, or telecommuting.



KETURAH
RESERVE

ZONE FOR MEDITATION

+971 (4) 245-6510



THE GYM

Work out in the equipped cool room at any time of the day, admiring the panoramic soothing views.



POOL WITH BIKES

The project will delight with the Invigorate Space indoor gym with a variety of group workouts, for example, a ride on water bikes.



EVENT AREA WITH SEATING
AND EQUIPPED KITCHEN



POOL IN GREEN

The image shows a modern children's play area. The ceiling is a large, undulating canopy made of a light-colored, woven mesh material, with numerous small, warm-toned lights embedded within it. Several large, teardrop-shaped sculptures hang from the canopy; they have a bulbous, textured base and a long, narrow neck that tapers upwards. On the ground, there are several low, ring-shaped or donut-shaped sculptures made of the same woven mesh. The play area is enclosed by a curved wall with large glass panels, through which trees and a clear sky are visible. The overall aesthetic is organic and artistic.

KETURAH
RESERVE

GAME ROOM

A children's play space featuring textile sculptures by award-winning artist Toshiko McAdam.

+971 (4) 245-6510



HIPPODROME MEYDAN

Keturah Reserve is an 8-minute drive from Meydan Hippodrome. Meydan is a complex directly from the hippodrome with stands, as well as a five-star Meydan hotel, an IMAX cinema for 585 spectators, a marina, a horse racing history museum, restaurants and parking for 8622 cars.





RAS AL KHOR RESERVE

Ras Al Khor Nature Reserve is a 14-minute drive from the townhouses. Incredibly, tens of thousands of wild birds live here, literally a stone's throw from the bustling metropolis. It also serves as a breeding center for various species of crustaceans, mammals and fish, but in winter flamingos become the main characters.

KETURAH
RESERVE

THE PROJECT WILL BE READY IN Q4 2024

+971 (4) 245-6510

PROJECT DEVELOPER – MAG PROPERTY

MAG Property Development (MAG PD) is the development arm of MAG Group, one of the largest legal entities in Dubai. With more than 40 years of history, the company is one of the largest corporations in the region and is a leader in real estate, engineering, industrial and commercial trade and cargo services.



KETURAH
RESERVE

BOOK A VIEWING BY PHONE:
+971 (4) 245-6510





Whitewill Real Estate Experts

We sell deluxe, premium and business class property in more than
140 residential developments in Dubai

+971 (4) 245-6510

